



SPECIFICATION

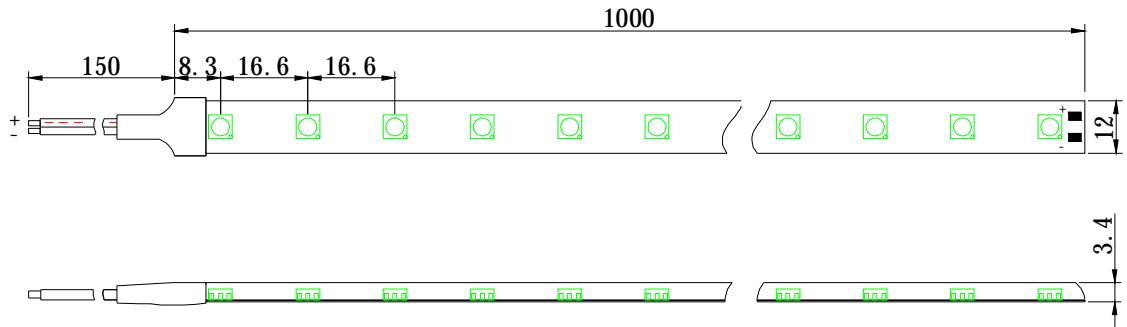
ITEM NO.: TF-60-W-5050-N



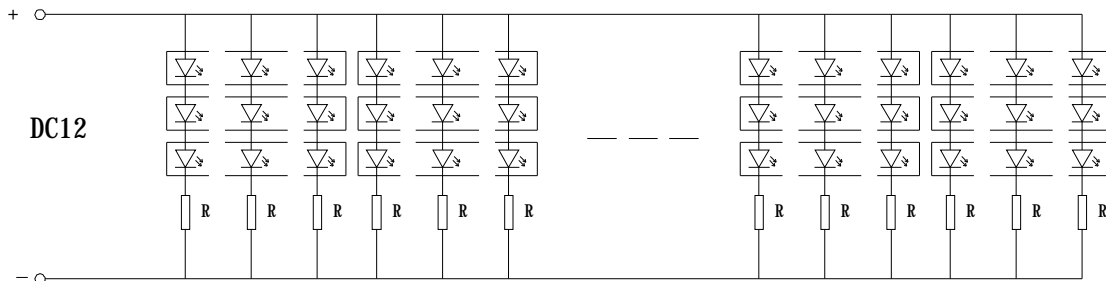
LED STRIP LIGHT

EDITED BY	REVISED BY	CONFIRMED BY	APPROVED BY

A. PHOTO AND DIMENSION (MM)



Units: Millimeters



This picture is crystal waterproof (Not-waterproof and tube waterproof available)

B. PARAMETERS

- ☀ LED Qty: 60PCS LED per 1 Meter
- ☀ Working Voltage: DC12 V;
- ☀ Working Current: 1020-1140mA;
- ☀ LED View Angle: 120 degree;
- ☀ Package: 5 meters / roll;

Maximum Rating at TA=25° C (Length @ 1 meter):

Parameter	Symbol	Maximum Rating	Unit
Forward Current	IF	1200	mA
Power Consumption	PD	14.4	W
Electrostatic discharge	ESD	800	V
Operating Temperature	Topr	-25 ~ +60	°C
Storage Temperature	Tstg	-40 ~ +80	°C

Electrical / optical Characteristics at TA=25°C (Length @ 1 meter):

Item Number	Color	LED Qty	LED Work Current	Wave Length	LED Luminous Flux	Package
TF-60-R-5050-N	RED	60 pcs/m	1020-1140mA	625-630nm	180-270Lm	5meters/ roll
TF-60-Y-5050-N	YELLOW	60 pcs/m	1020-1140mA	590-595nm	180-270Lm	
TF-60-B-5050-N	BLUE	60 pcs/m	1020-1140mA	465-470nm	120-180Lm	
TF-60-G-5050-N	GREEN	60 pcs/m	1020-1140mA	515-520nm	360-420Lm	
TF-60-W-5050-N	White	60 pcs/m	1020-1140mA	6000-7000k	420-540Lm	
TF-60-CW-5050-N	Cool White	60 pcs/m	1020-1140mA	8000-9000k	420-540Lm	
TF-60-WW-5050-N	Warm White	60 pcs/m	1020-1140mA	2900-3200k	360-420Lm	

☀ Notes: Tolerance of measurement of luminous intensity±15%.

Both of waterproof and un-waterproof ones are available, more details please contact with sales@theledlight.com.cn

C. USE MANUAL

- ☀ Please read this specification first to make sure the using condition is suitable for use.
- ☀ Please shut off the switch before connect this products to power, then turn on.

D. WORKING PHOTO

