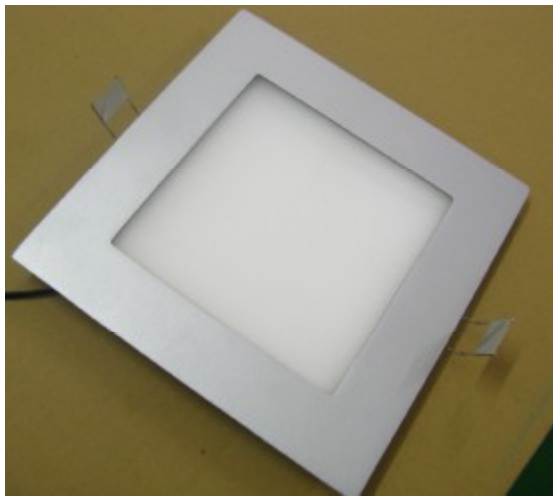
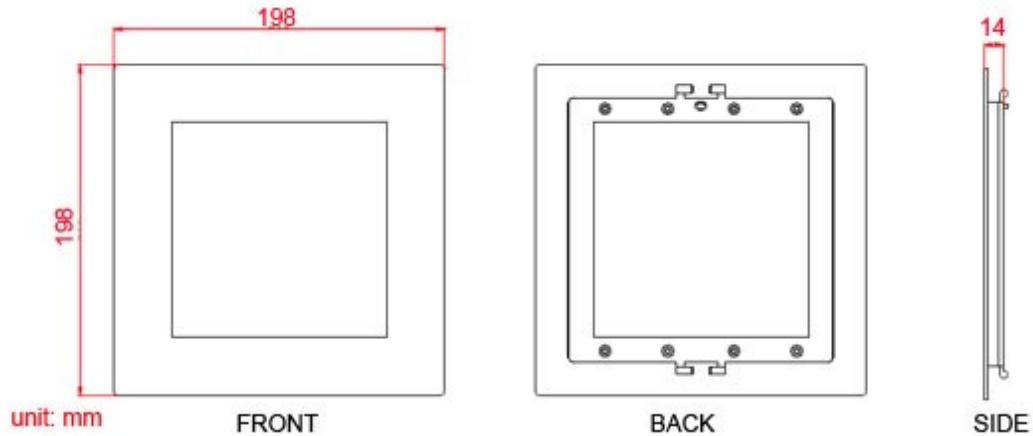


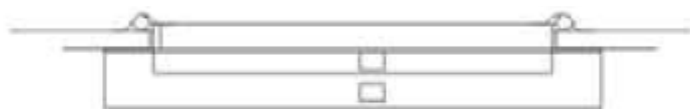
Product: LED PANEL LIGHT
Input Voltage: AC100V-240V / DC24V
Dimensions: 198mm x 198mm x 14mm

Item No.: TP-09-W-2020-G
Power Consumption: 9Watts

A. PHOTO AND DIMENSION (MM)



B. INSTALLATION METHOD



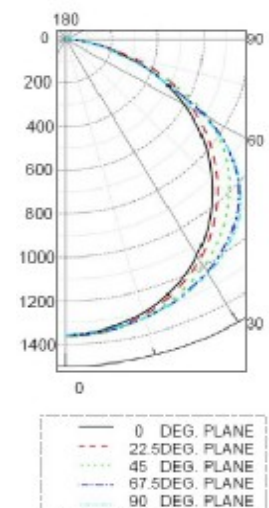
Recessed

C. PARAMETERS

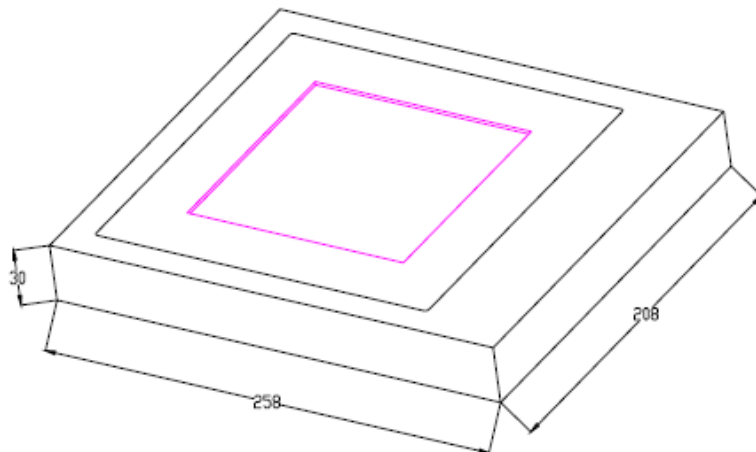
ITEMS	PARAMETERS
Input Voltage	AC100-240V
Power consumption	9W
Luminous Flux	560 Lm(Cold white), 548 Lm(Natural white) 361 Lm(Warm white)
Luminosity (height @ 1 meter)	170 Lux (Cold white), 162 Lux (Natural white) 140 Lux (Warm white)
Color available	Cold white/Warm white/Natural white /Red /Green/Blue/Yellow/Orange/RGB
Life time	>50,000 hous
Operating Temperature	-10 °C to +40°C
Storage Temperature	-20 °C to +60°C
Humidity Operating	10-80%
Humidity Storage	10-80%
Weight	0.6KGS/PCS
Dimensions	198mm*198mm*14mm
IK Code	IK04
IP Code	IP41
Fixing Ways	In-built, Mounting, Suspending
Packing:	Inner Carton : 258*208*30 mm (1pcs/ctn) Outer Carton : 445*367*280 mm (20pcs/ctn)

D. ILLUMINATION TEST AND LIGHT DISTRIBUTION GRAPH

Item No. TP-09-W-2020-G		
Height (M)	Area Φ (M)	Illumination Intensity (Lux)
0.5	0.57	575
1.0	1.09	162
1.5	1.73	70
2.0	2.30	39
2.5	2.88	27
3.0	3.46	19
Beam angle: 60 degree		Color: Cold White



E. PACKAGE



Shenzhen TheLEDLight Co., Ltd
The LED Light (China) Co., Limited

Tel: +86-755-29652010

Fax: +86-755-29652015

<http://www.theledlight.com.cn>

<http://www.ledpanellights.com>

sales@theledlight.com.cn

sales@ledpanellights.com

SHENZHEN. CHINA